

Jesus Showed Peter

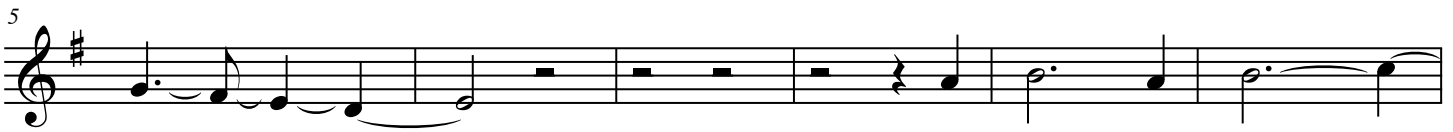
Mar Samuel
Robert Lloyd

Em C Am D G Em C D



Je sus showed Pe ter a cross of ra dian
You see this cross of Light, from dark ness
You see my cross of wood. It points to
When you have found your self, you will have

G Em C D G Em C D Bm Em G C



Light, _____ a cross that joins to
it _____ re deems and saves your soul as
sal _____ va _____ tion but you must not _____
found _____ your God. Your God, your Source and

G Em C D G Em C D Em C



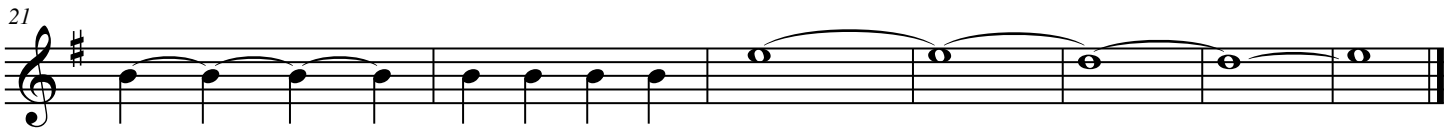
geth er and u nites all op po sites. "Pe ter," said
mor tal na _____ ture is cru ci fied. From it you
stop to wor ship it. I am not there. Pick up your
Des _____ ti ny for both are one. Let Je sus trans

Am D G Em C D G Em C D



Je sus, "this cross is now your bridge _____ to Ex al
are raised through res sur rec tion's pow'r _____ to live with
cross _____ of wood As cend the cross _____ of Light un til you
form you through res sur rec tion's pow'r _____ un til you're

Bm Em G7 C C/B AmAm/G D D/C G D Em



ta _____ tion's _____ Life Di
me _____ in End less
find _____ your _____ self, _____ with
one with the Div ine, your one True Vine."
Lives. _____
in! _____
Self! _____